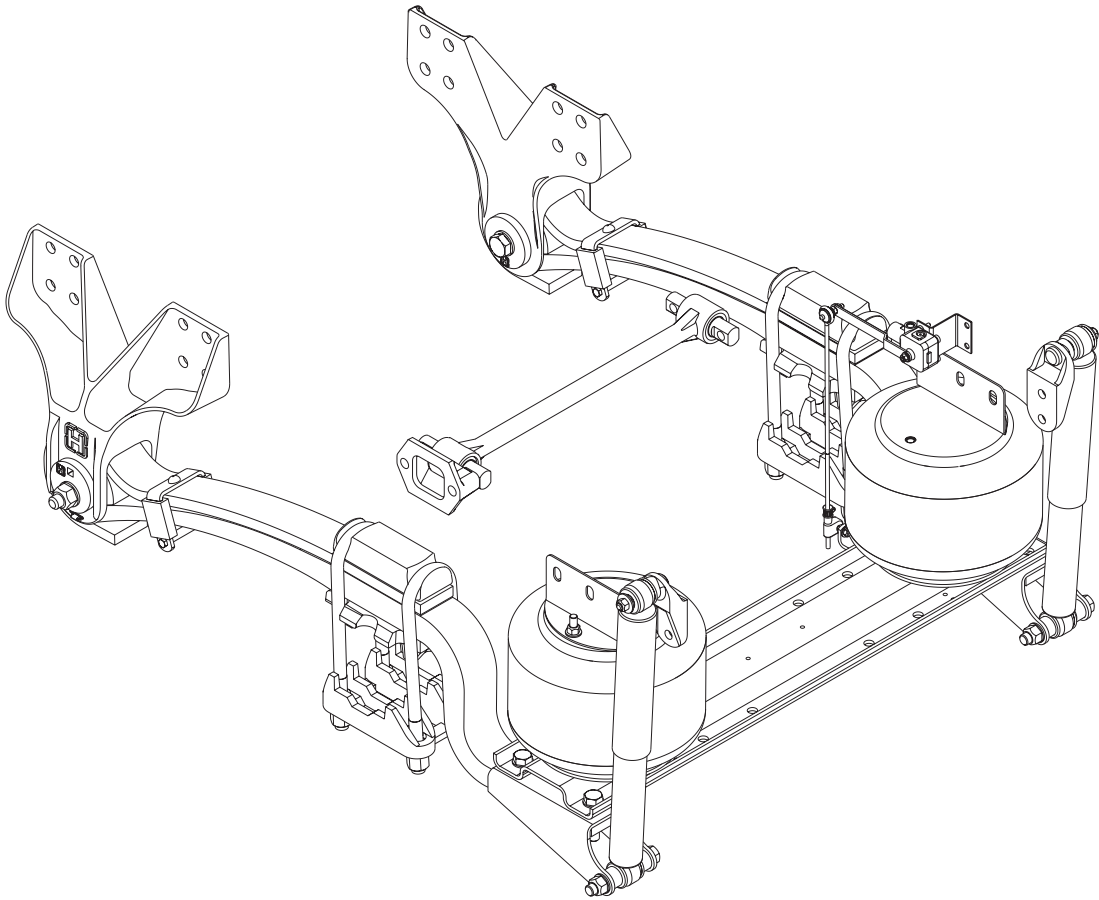


PARTS LIST

COMFORT AIR™

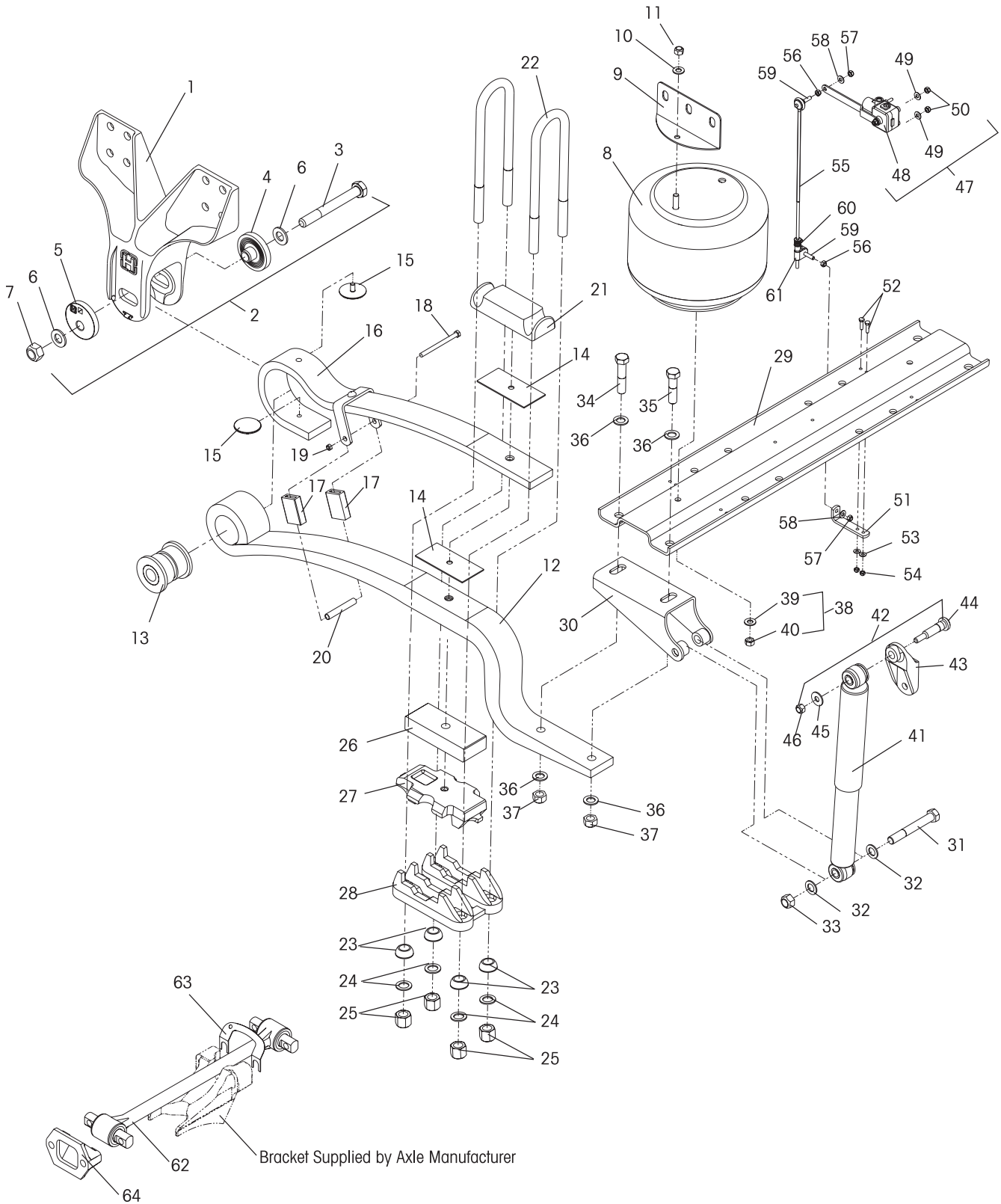
LIT NO: SP-173

DATE: November 2003 REVISION: B



For The Road Ahead

 HENDRICKSON





KEY NO.	PART NO.	DESCRIPTION	NO.REQ.	KEY NO.	PART NO.	DESCRIPTION	NO.REQ.
1	60784-000	Frame Hanger	2	29	--	Cross Channel (Contact Tech Services for proper Cross Channel)	1
2	60632-001	QUIK-ALIGN® Kit (Includes Key Nos. 3-7)	1		57356-000	Lower Shock Bracket Ass'y (Includes Key Nos. 30-33)	2
	34013-103	Pivot Bushing Service Kit (Includes Key Nos.3, 6, 7, 13, 15) Services 1 Side Only		30	--	*Lower Shock Bracket	2
3	64107-000	1"- 8 UNC 7.50" Bolt	2	31	50764-002	¾" 10UNC 5.50" Bolt	2
4	64097-000	QUIK-ALIGN Concentric Collar	3	32	22962-001	¾" Hardened Washer	4
5	64096-000	QUIK-ALIGN Eccentric Collar	1	33	49842-000	¾" 10UNC Locknut	2
6	22962-035	1" Hardened Washer	4		50763-004	Cross Channel Fastener Kit (Includes Key Nos. 34-37)	1
7	64108-000	1"-8 UNC Locknut	2	34	50764-003	¾" 10UNC 3.50" Bolt	2
	60925-002	Air Spring Ass'y (Includes Key Nos. 8-11)	2	35	50764-005	¾" 10UNC 3.00" Bolt	2
	60929-002	Rear Engine		36	22962-001	¾" Hardened Washer	8
8	--	*Air Spring	2	37	49842-000	¾" 10UNC Locknut	4
9	57096-002	Air Spring Hanger	2	38	49177-006	Air Spring Fastener Kit (Includes Key Nos. 39-40)	1
10	22962-014	½" Hardened Washer	2	39	22962-014	½" Hardened Washer	2
11	17700-010	½"-13 UNC Nylocknut	2	40	17700-010	½" 13UNC Nylocknut	2
	60779-000	MSM Ass'y (Includes Key Nos. 12-20)	2	41	60998-001	Shock Absorber	2
12	--	*Main Support Member	2	42	57322-002	Upper Shock Frame Bracket Assembly (Includes Key Nos. 43-45)	2
13	58648-000	Pivot Bushing	2	43	--	*Shock Frame Hanger	2
14	--	*Liner	4	44	50368-000	½" 13UNC Serrated Shank Bolt	2
15	64817-000	Puck	4	45	22962-031	½" Hardened Washer	2
	49175-026	Spring Clip Fastener Kit (Includes Key Nos.17, 18, Washer, 19)		46	49846-000	½" 13 UNC Locknut	2
16	--	Secondary Leaf	4	47	59013-000	Height Control Valve Kit (Includes Key Nos. 48-50)	1
17	64272-000	Spring Clip Sleeve	4	48	--	*Height Control Valve	1
18	--	*7/16"-14 UNC Bolt	2	49	22962-028	¼" Hardened Washer	2
	--	*7/16" Washer	Not Shown	50	49983-000	¼" 20 UNC Locknut	2
19	--	*7/16"-14 UNC Locknut	2		Control Valve Lower Link Bracket Kit (Includes Key Nos. 51-54)		1
20	--	Clip Bolt Spacer	2		57430-000	Front Engine	
21		Top Pad	2		57430-003	Rear Engine	
	56805-000			51	56789-000	Control Valve Link Bracket Front Engine	1
	57724-000	15,000 lb. capacity			58367-000	Rear Engine	
		U Bolt Kit		52	56935-002	¼"-20 UNC 1.00" Bolt	2
	48718-023	7/8" 15.0" (Includes Key Nos. 22,23,24,25)		53	22962-028	¼" Hardened Washer	4
	48718-002	7/8" 16.25" (Includes Key Nos. 22,24,25)		54	49983-000	¼"-20 UNC Locknut	2
	48718-104	¾" 16.0" 15,000 lb. Capacity, (Includes Key Nos. 22,24,25)			58994-	Height Control Valve Link Ass'y , Specify Length (Includes Key Nos. 55-61)	1
22		U Bolt	4	55	--	*Extension Rod	1
	47417-007	7/8"-14 UNF 15.0"		56	--	*5/16"-18 UNC Jam Nut	2
	47417-001	7/8"-14 UNF 16.25		57	--	*5/16"-18 UNC Locknut	2
	49684-014	¾"-16 UNF 16.0" (15,000 lb.Capacity)		58	--	*5/16" Hardened Washer	2
23	48574-000	Spherical Washer	8	59	--	*5/16"-18 UNC Stud	2
24		Hardened Flat Washer	8	60	--	*Valve Arm Clamp	1
	22962-002	7/8"		61	--	*Adjustable Valve Arm Joint	1
	22962-001	¾" (15,000 lb. Capacity)		62	62000-	Transverse Rod Ass'y, Specify Length	1
25		U Bolt Locknut	8		62001-620	Transverse Rod Ass'y 15,000 lbs. Applications	1
	50765-000	7/8"-14 UNF			**	Two-Piece Torque Rod	
	49685-000	¾"-16 UNF (15,000 lb. Capacity)		63	49689-000	Torque Rod Shim	As Req.
26	48531-014	Spacer 1.5" (As Required)	2	64	22186-000	Transverse Rod Frame Bracket	1
27		Spring Seat	2				
		Meritor RS15-120					
	57022-010	4.5° Pinion Angle LH/RH					
		Meritor RS21-145, RS23-160					
	56501-006	4.5° Pinion Angle LH/RH					
	56501-019	0.0° Pinion Angle LH/RH					
	56501-020	4.5° Pinion Angle LH/RH					
	56501-021	0.0° Pinion Angle LH/RH					
	56501-022	2.0° Pinion Angle LH/RH					
		Meritor RC23-160					
	56501-020	Negative 4.5° Pinion Angle LH/RH					
28		Axle Bottom Cap	2				
		Meritor RS15-120					
	57024-000	2-5.0° Pinion Angle LH/RH					
		Meritor RS21-145, RS23-160					
	50216-000	0-9.5° Pinion Angle LH/RH					
		Meritor RC23-160					
	50216-000	Negative 0-9.5° Angle LH/RH					

SERVICE KITS QUICK REFERENCE

60632-001	QUIK-ALIGN Kit
34013-103	Pivot Bushing Service Kit
49175-026	Spring Clip Fastener Kit
50763-004	Cross Channel Fastener Kit
49177-006	Air Spring Fastener Kit
59013-000	Height Control Valve Kit
	Lower Control Valve Link Kit
57430-000	(All Except Rear Engine)
57430-003	(Rear Engine Only)
48718-	U Bolt Kit (Specify Length)
48718-104	U Bolt Kit 15,000 lb. Capacity

NOTE

- * Item included in assembly only, part not sold separately.
- **Hendrickson two piece torque rods can be used to create the desired torque rod length, see literature number 45745-149 for more information. Hendrickson's literature is also available on our website: www.hendrickson-intl.com.

