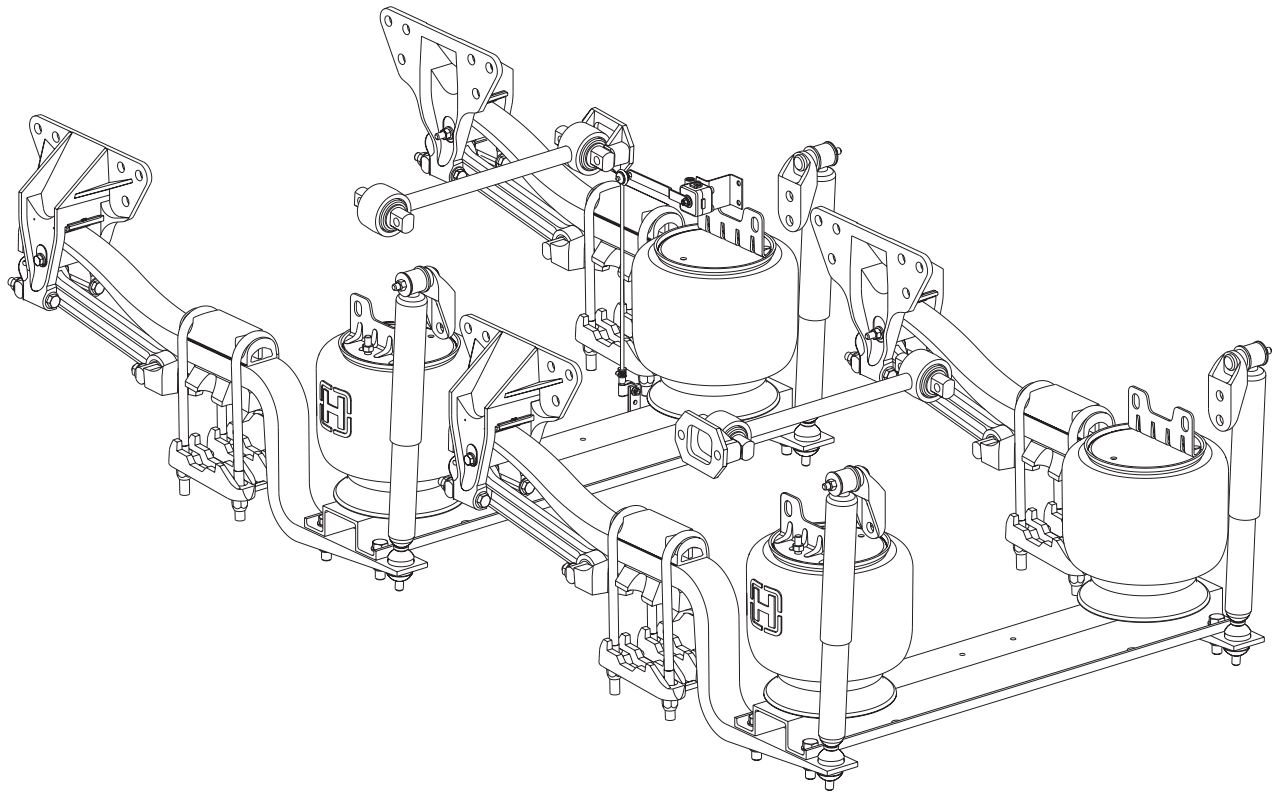


# **H PARTS LIST**

**HAS-40LH**

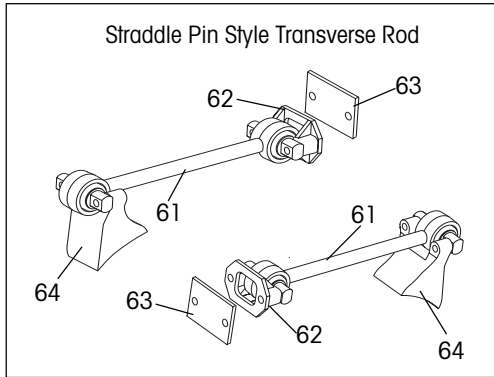
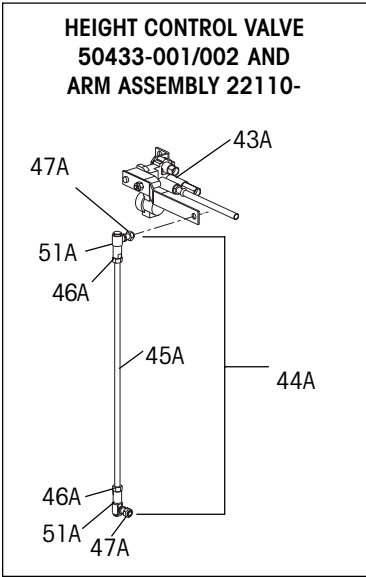
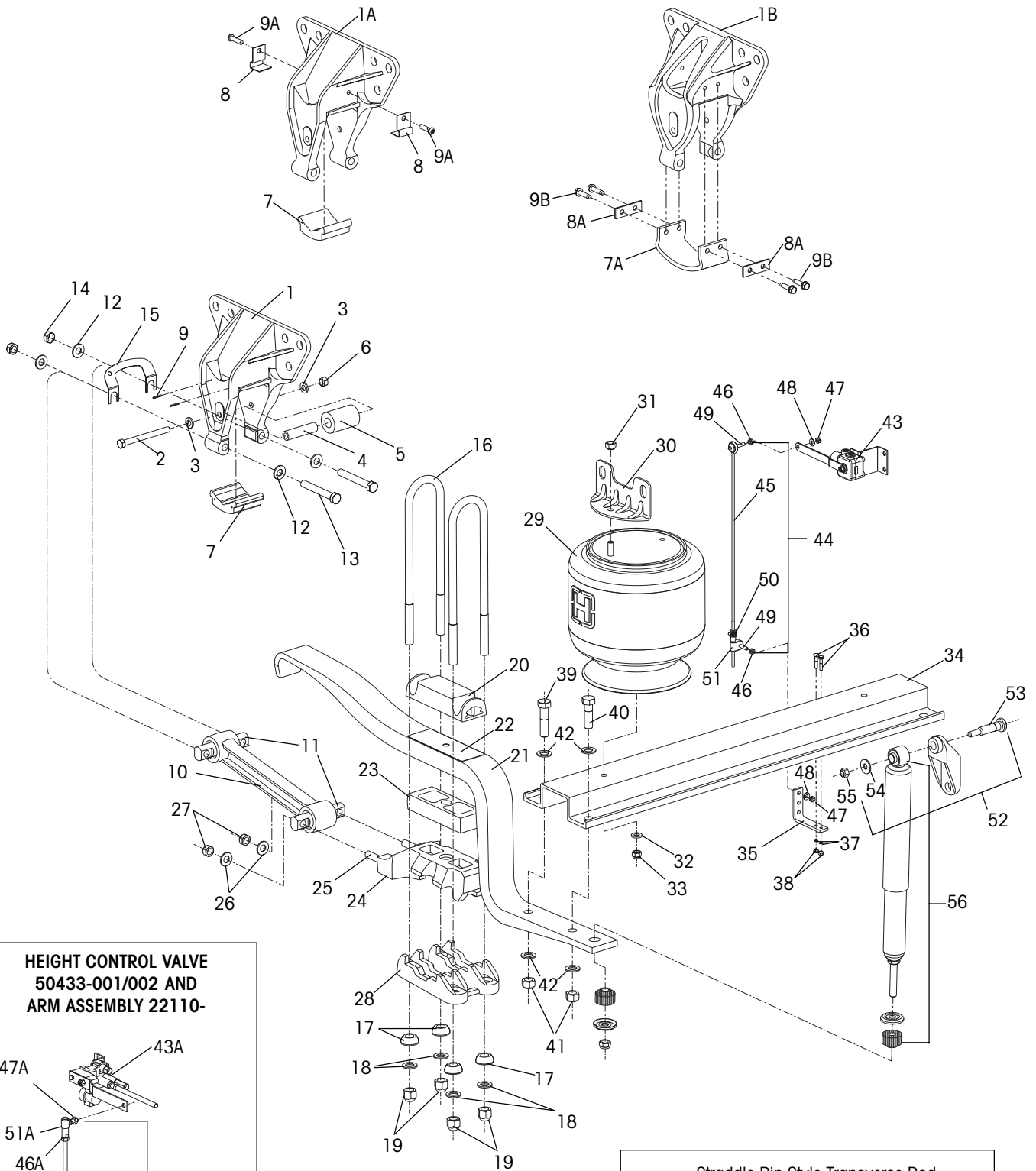
---



---

*For The Road Ahead*

**H HENDRICKSON**



**HAS-40LH**

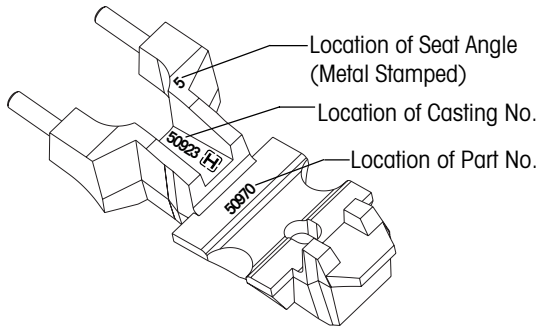


**PARTS LIST  
HAS-40LH**

KEY NO.	PART NO.	DESCRIPTION	NO. REQ.	KEY NO.	PART NO.	DESCRIPTION	NO. REQ.
1	<b>58425-001</b>	Front Spring Hanger Assembly Casting No. 57188-001 Replaces 57190-001 and 50752-001	4		<b>48902-000</b> <b>48903-000</b>	1" 1½"	As Req. As Req.
1	<b>58688-001</b>	Casting No. 57476-000, Reinforced Frame Replaces 57478-001	4	24		Spring Seat Assembly (Includes Key Nos. 25,26,27) See following charts	4
1A	<b>57190-001</b>	Casting No. 57188-001	4	25	<b>50918-000</b>	5/8" 11UNC Spring Seat Stud	8
1A	<b>57478-001</b>	Casting No. 57476-000, Reinforced Frame	4	26	<b>22962-004</b>	5/8" Hardened Flat Washer	8
1B	<b>50752-001</b>	Casting No. 56669-000	4	27	<b>47764-000</b>	5/8" 11UNC Spring Seat Nut	8
	<b>49175-013</b>	Rebound Roller Kit (Includes Key Nos. 2,3,4,5,6)	1	28	<b>57198-000</b> <b>57199-000</b>	Axle Bottom Cap (Meritor RT34-145, RT40-145, Eaton D404) LHF/RHF/LHR/RHR 0-9.5° Pinion Angle LHR/RHR 10-12.5° Pinion Angle	4
2	<b>24531-015</b>	½" 13UNC Rebound Bolt	4		<b>57198-000</b> <b>57197-000</b> <b>57200-000</b> <b>57199-000</b>	Axle Bottom Cap (Eaton D341, D402) LHF 0-9.5° Pinion Angle RHF 0-9.5° Pinion Angle LHR 10-12.5° Pinion Angle RHR 10-12.5° Pinion Angle	
3	<b>22962-014</b>	½" Hardened Flat Washer	8	28	<b>57198-000</b> <b>57197-000</b> <b>57200-000</b> <b>57199-000</b>	Axle Bottom Cap (Eaton D341, D402) LHF 0-9.5° Pinion Angle RHF 0-9.5° Pinion Angle LHR 10-12.5° Pinion Angle RHR 10-12.5° Pinion Angle	
4	<b>57988-000</b>	Rebound Bolt Spacer, Replaces 47458-000	4	29	<b>50898-002</b>	Air Spring, Replaces 50898-001 (Includes Key Nos. 30, 31)	4
5	<b>57989-000</b>	Rebound Roller, Replaces 48883-000	4	30	<b>50804-002</b>	Air Spring Frame Hanger Replaces 50804-001	4
6	<b>49846-000</b>	½" 13UNC Rebound Bolt Nut	4	31	<b>17700-010</b> <b>49177-005</b>	½"13UNC Air Spring Locknut Air Spring Fastener Kit (Includes Key Nos. 32, 33)	4 1
	<b>56557-005</b>	Slipper Pad Kit, for Key No. 1 (Includes Key Nos. 7, 9)	4	32	<b>22962-014</b>	½" Hardened Flat Washer	4
	<b>56557-004</b>	Slipper Pad Kit, for Key No. 1A (Includes Key Nos. 7,8,9A)	4	33	<b>17700-010</b>	½"13UNC Air Spring Locknut	4
	<b>56557-002</b>	Slipper Pad Kit, for Key No. 1B (Includes Key Nos. 7A,8A,9B)	4	34	<b>57192-001</b> <b>57430-000</b>	Cross Channel Control Valve Bracket Kit, (Includes Key Nos. 35, 36, 37, 38)	2 2
7	<b>56929-000</b>	Slipper Pad	4		<b>56789-000</b>	Control Valve Bracket	1
7A	<b>50612-000</b>	Slipper Pad	4	35	<b>56935-002</b>	¼" 20UNC Bolt	2
8	<b>57566-000</b>	Retainer Clip	8	36	<b>22962-028</b>	¼" Hardened Flat Washer	4
8A	<b>50597-000</b>	Retainer Plate	8	37	<b>49983-000</b>	¼" 20UNC Locknut	2
9	<b>58287-001</b>	Slipper Pad Lock Pin 1"	8		<b>50763-001</b>	Cross Channel Fastener Kit (Includes Key Nos. 39,40, 41,42)	1
9A	<b>57540-000</b>	3/8" Button Head Screw	8	39	<b>50764-005</b>	¾" 10UNC Bolt-Forward 3"	4
9B	<b>57306-000</b>	3/8" Rolok Screw	16	40	<b>50764-007</b>	¾" 10UNC Bolt-Rear 2½"	4
10	<b>48411-006</b>	Shim Type Adjustable Torque Rod Assembly -14.41"	4	41	<b>49842-000</b>	¾" 10UNC Locknut	8
11	<b>47691-000</b>	Torque Rod Bushing	8	42	<b>22962-001</b>	¾" Hardened Flat Washer	16
	<b>49176-001</b>	Torque Rod Fastener Kit (Includes Key Nos. 12,13,14)	1	43	<b>57977-000</b>	Height Control Valve	1
12	<b>22962-004</b>	5/8" Hardened Flat Washer	16	43A	<b>50433-001</b>	H. Control Valve LH Frame Rail	1
13	<b>32043-005</b>	5/8" 11UNC 4.5"Torque Rod Bolt	8	43A	<b>50433-002</b>	H. Control Valve RH Frame Rail	1
14	<b>47764-000</b>	5/8" 11UNC Torque Rod Nut	8	44	<b>58994-000</b>	Height Control Valve Arm Assly, Specify Length, (Includes Key Nos. 45,46,47,48,49,50,51)	1
15	<b>49689-000</b>	Torque Rod Shim	As Req.	44A	<b>22110-000</b>	Height Control Valve Arm Assy. Specify Length, (Includes Key Nos. 45A, 46A, 47A, 51A)	1
	<b>48718-000</b>	U-Bolt Assembly, (Includes Key Nos. 16,17,18,19)	1				
16	<b>49684-000</b>	¾" 16UNF U-Bolt (Specify Length)	8				
17	<b>49947-000</b>	¾" Spherical Washer	16				
18	<b>22962-001</b>	¾" Hardened Flat Washer	16				
19	<b>49685-000</b>	¾" 16UNF U-Bolt Nut	16				
20	<b>57195-000</b>	Top Pad	4				
21	<b>57217-000</b>	Main Support Member 1¾", (Includes Key No. 22)	4				
22	<b>47905-000</b>	Liner	4				
23		Spacer	4				

Bottom View of Spring Seat

SPRING SEAT ASSEMBLY



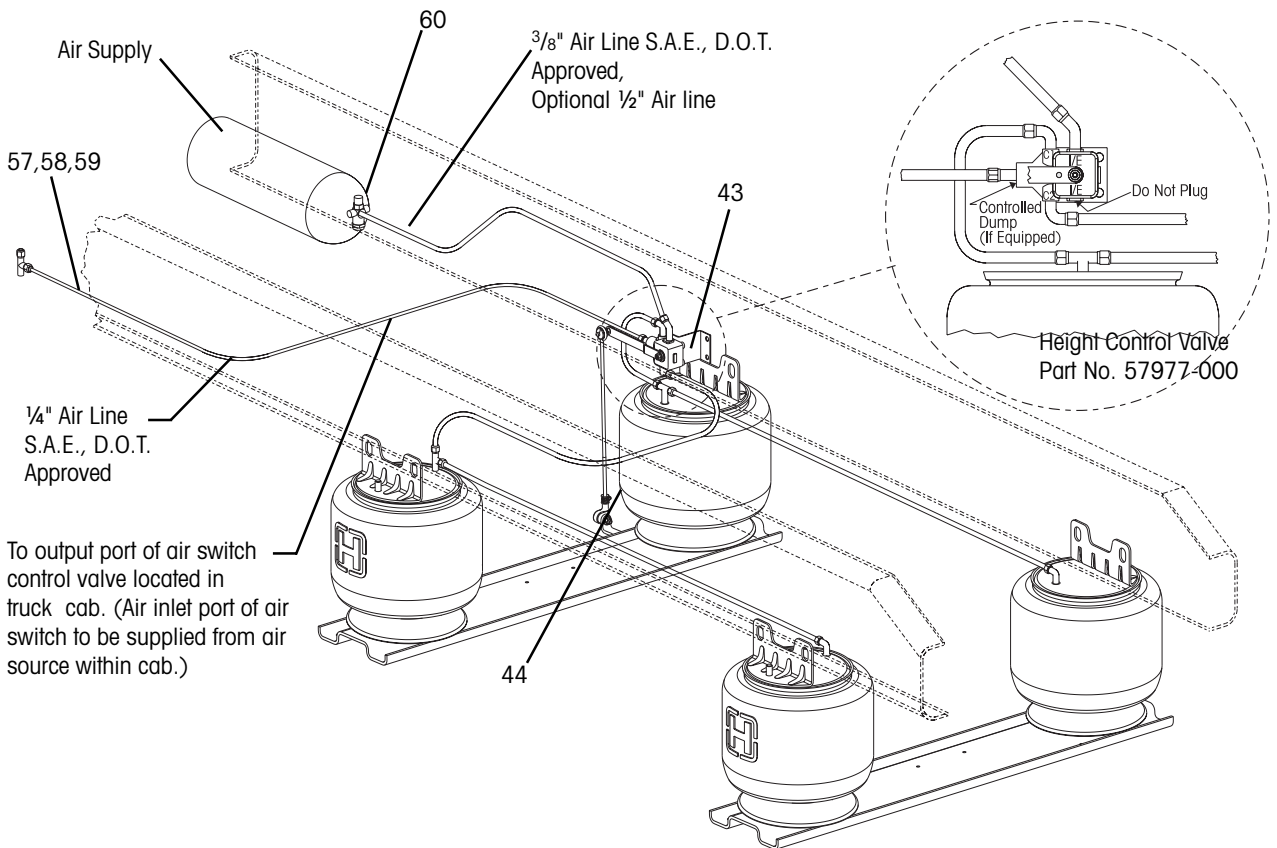
Includes Key Nos. 25,26,27  
Total of 4 Spring Seats Required  
per Tandem Suspension

KEY NO. 24	LEFT FRONT		RIGHT FRONT		
	Eaton D341,D402, D404 Meritor RT40-145		Eaton D404 Meritor RT40-145	Eaton D341,D402	
CASTING NO.	50923-000		50923-000	50974-000	
SEAT ANGLE	⊞ PART NO.	NO.REQ.	⊞ PART NO.	⊞ PART NO.	NO.REQ.
2.0°	50970-001	1	50970-001	50976-001	1
2.5°	50970-002	1	50970-002	50976-002	1
3.0°	50970-003	1	50970-003	50976-003	1
3.5°	50970-004	1	50970-004	50976-004	1
4.0°	50970-005	1	50970-005	50976-005	1
4.5°	50970-006	1	50970-006	50976-006	1
5.0°	50970-007	1	50970-007	50976-007	1
5.5°	50970-008	1	50970-008	50976-008	1
6.0°	50970-009	1	50970-009	50976-009	1
6.5°	50970-010	1	50970-010	50976-010	1
7.0°	50970-011	1	50970-011	50976-011	1

KEY NO. 24	LEFT REAR		RIGHT REAR		
	Eaton D404 Meritor RT40-145	Eaton D341, 402		Eaton D341, D402 D404 Meritor RT40-145	
CASTING NO.	50971-000		50977-000	50971-000	
SEAT ANGLE	⊞ PART NO.	⊞ PART NO.	NO.REQ.	⊞ PART NO.	NO.REQ.
5.0°	50973-011	50979-011	1	50973-011	1
6.5°	50973-012	50979-012	1	50973-012	1
7.5°	50973-013	50979-016	1	50973-013	1
8.0°	50973-001	50979-001	1	50973-001	1
8.5°	50973-002	50979-002	1	50973-002	1
9.0°	50973-003	50979-003	1	50973-003	1
9.5°	50973-004	50979-004	1	50973-004	1
10.0°	50973-005	50979-005	1	50973-005	1
10.5°	50973-006	50979-006	1	50973-006	1
11.0°	50973-007	50979-007	1	50973-007	1
11.5°	50973-008	50979-008	1	50973-008	1
12.0°	50973-009	50979-009	1	50973-009	1
12.5°	50973-010	50979-010	1	50973-010	1
13.0°	50973-015	50979-017	1	50973-015	1
13.5°	50973-014	50979-018	1	50973-014	1
14.0°	50973-016		1	50973-016	1



KEY NO.	PART NO.	DESCRIPTION	NO. REQ.	KEY NO.	PART NO.	DESCRIPTION	NO. REQ.
45	<b>58993-</b>	Extension Rod (Specify length) Replaces 58400-	1	56	<b>57241-001</b>	Shock Absorber	4
45A	<b>22107-</b>	Extension Rod, (Specify Length)	1		<b>57985-001</b>	Hi Torque Shock Absorber	4
46	<b>17491-011</b>	$\frac{5}{16}$ " 18UNC Jam Nut	2		<b>48689-001</b>	Quick Release Kit, <b>Use only with:</b> Height Control Valve 50433-001/002 (Includes Key Nos. 57,58,59)	
46A	<b>17491-019</b>	$\frac{5}{16}$ " 24UNF Jam Nut	2	57	<b>48914-000</b>	Air Dump Switch, Located In Cab	1
47	<b>59016-000</b>	$\frac{5}{16}$ " 18UNC Locknut	2	58	<b>49193-001</b>	Synchro-Relay Valve	1
47A	<b>48948-000</b>	$\frac{5}{16}$ " 24UNF Locknut	2	59	<b>48940-000</b>	Air Switch Name Plate, Located In Cab	1
48	<b>22962-029</b>	$\frac{5}{16}$ " Hardened Washer	2	60	<b>30272-000</b>	Pressure Protection Valve	1
49	<b>59169-000</b>	$\frac{5}{16}$ " 18UNC Stud	2	61	<b>52271-000</b>	Transverse Rod Assembly Straddle Pin Style	2
50	<b>58969-000</b>	Valve Arm Clamp	1		<b>50234-000A</b>	Taper Pin Style	
51	<b>58987-000</b>	Adj. Valve Arm Joint	1	62	<b>22186-000</b>	Transverse Rod Frame Bracket	2
51A	<b>30727-000</b>	Ball Joint	2	63	<b>45045-003</b>	Back Up Plate	2
52	<b>57322-001</b>	Shock Frame Hanger Assembly (Includes Key Nos. 53,54,55)	4	64		Transverse Rod Axle Bracket (Part of Axle)	2
53	<b>50368-000</b>	$\frac{1}{2}$ " 13UNC Serrated Shank Bolt	4				
54	<b>22962-031</b>	$\frac{1}{2}$ " Hardened Flat Washer	4				
55	<b>49846-000</b>	$\frac{1}{2}$ " 13UNC Locknut	4				



 **HENDRICKSON**  
*Truck Suspension Systems*

A Boler Company