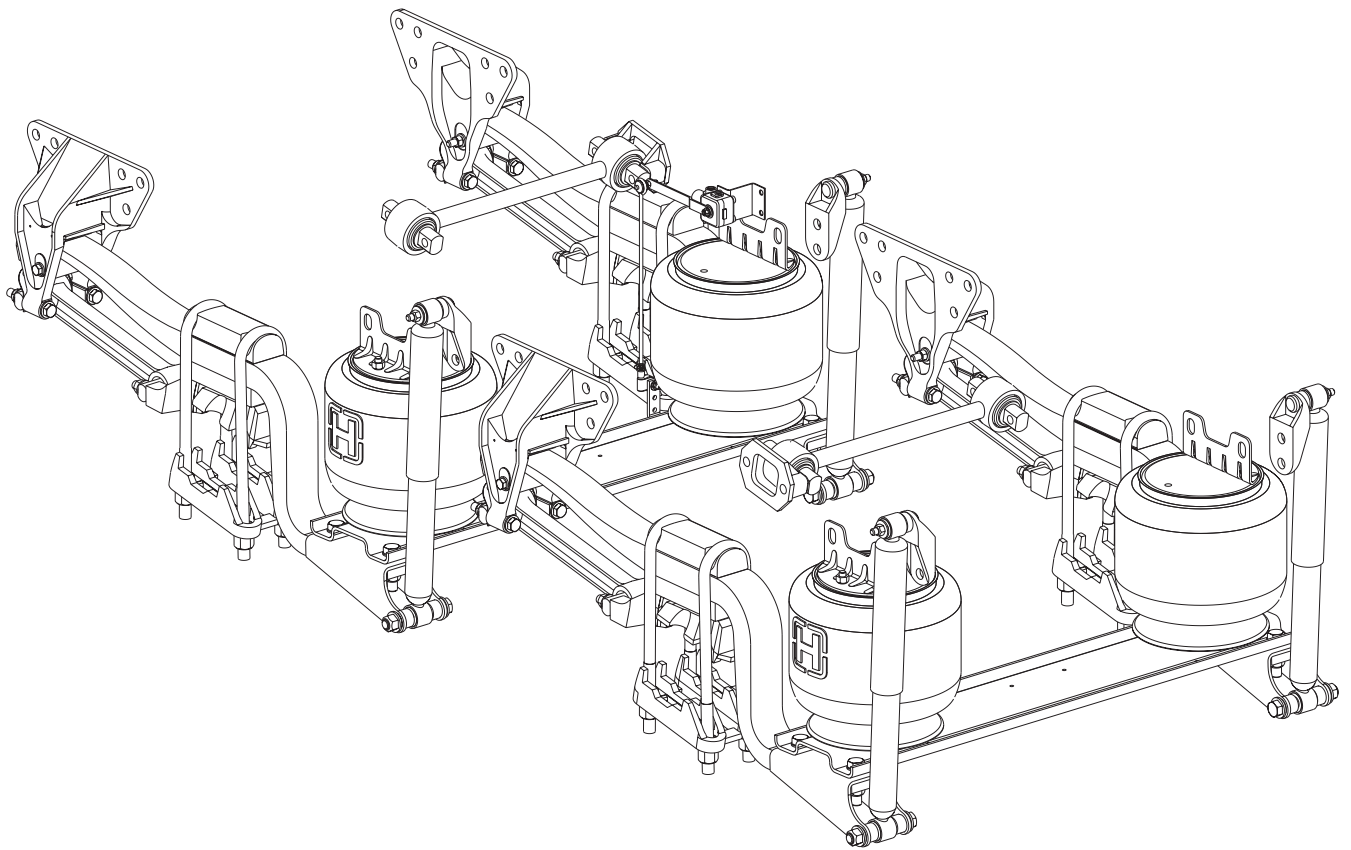


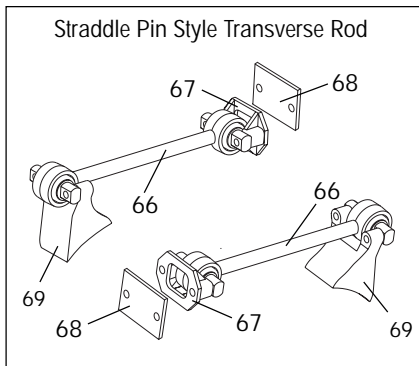
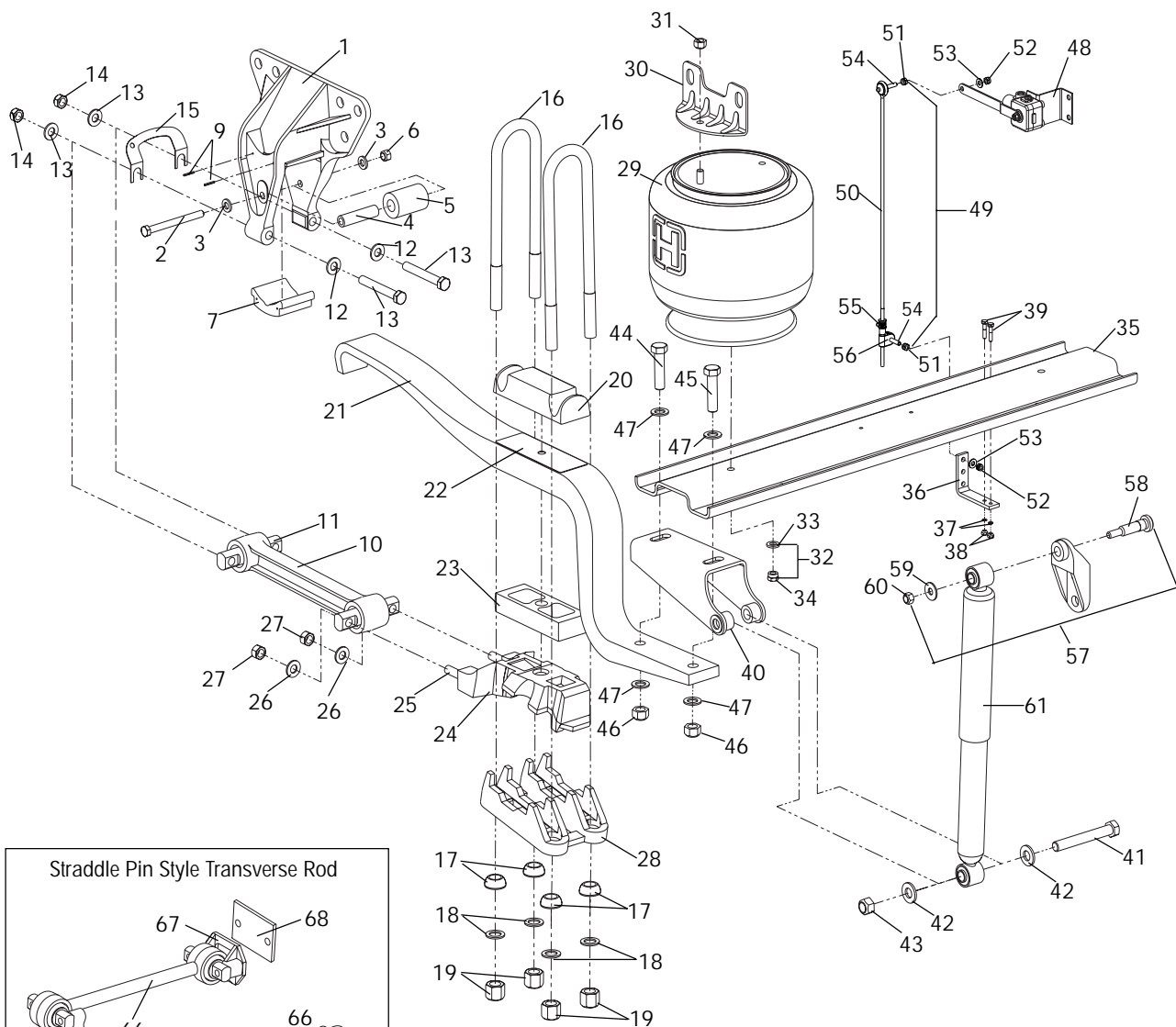
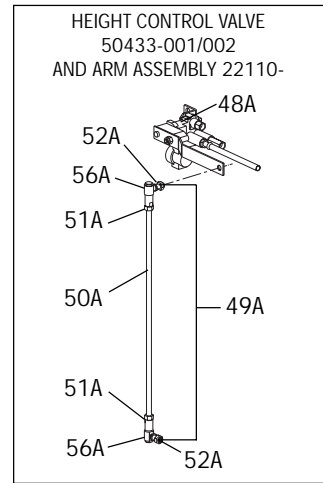
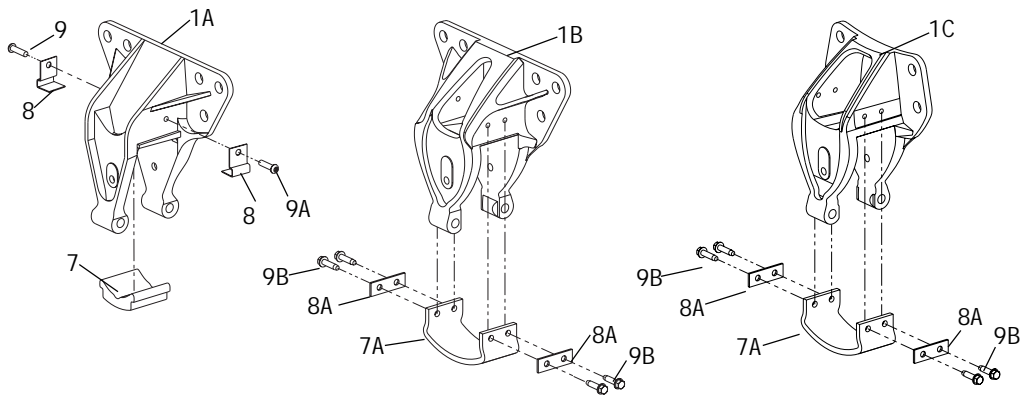
PARTS LIST

HAS 360/400/402/460



For The Road Ahead

 **HENDRICKSON**



HAS 360/400/402/460

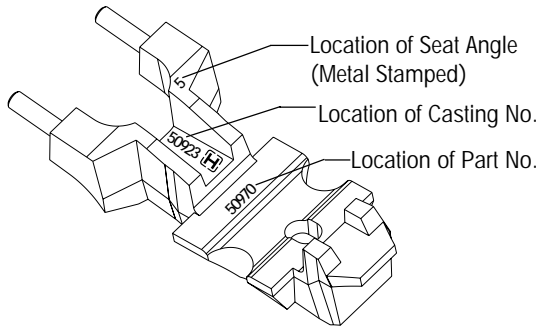
Bulletin No. SP-149



KEY NO.	PART NO.	DESCRIPTION	NO.REQ.	KEY NO.	PART NO.	DESCRIPTION	NO.REQ.
1	58425-001	Front Spring Hanger Assembly HAS-400/402/460 Std. Frame Casting No. 57188-000 Replaces 57190-001 and 50752-001	4	16	47417-	7/8" 14UNF U-Bolt (Specify Length)	8
				17	48574-000	Spherical Washer	16
				18	22962-002	7/8" Hardened Flat Washer	16
				19	50765-000	7/8" 14UNF U-Bolt Nut	16
				20	56805-000	Top Pad	4
1	58688-001	HAS-400/402/460 Rein. Frame Casting No. 54746-000 Replaces 57478-001		21		Main Support Member (Includes Key No. 22)	4
1A	57190-001	HAS-400/402/460 Std. Frame Casting No. 57188-000			56940-000	HAS-360 (1¾")	
1A	57478-001	HAS-400/402/460 Rein. Frame Casting No. 57476-000			56943-000	HAS-400 (17/8")	
					56946-000	HAS-402/460 (2")	
1B	50752-001	HAS-400/402/460 Casting No. 56669-000		22	47905-000	Liner	4
1C	50753-001	HAS-360, Casting No. 49848-000 Or 56666-000		23		Spacer	4
					48902-000	1"	As Req.
					48903-000	1½"	As Req.
	49175-013	Rebound Roller Kit (Includes Key Nos. 2, 3, 4, 5, 6)	1	24		Spring Seat Assembly (Includes Key Nos. 25, 26, 27) See following charts	4
2	24531-015	½" 13UNC Rebound Bolt	4	25	50918-000	5/8" 11UNC Spring Seat Stud	8
3	22962-014	½" Hardened Flat Washer	8	26	22962-004	5/8" Hardened Flat Washer	8
4	57988-000	Rebound Bolt Spacer Replaces 47458-000	4	27	47764-000	5/8" 11UNC Spring Seat Nut	8
5	57989-000	Rebound Roller Replaces 48883-000	4	28		Axle Bottom Cap (Meritor: RT34-145, RT40-145, RT44-145, RT46-160, Eaton D404, DSS40, D462)	4
6	49846-000	½" 13UNC Rebound Bolt Nut	4		50216-000	LHF/RHF/LHR/RHR	
	56557-005	Slipper Pad Kit, For Key No. 1 (Includes Key Nos. 7,9)	4		50222-000	0-9.5° Pinion Angle LHR/RHR 10-12.5° Pinion Angle	
	56557-004	Slipper Pad Kit, For Key No. 1A (Includes Key Nos. 7, 8, 9A)	4	28		Axle Bottom Cap (Meritor: SSHD, RT45-157)	4
	56557-002	Slipper Pad Kit, For Key No. 1B & 1C (Includes Key Nos. 7A, 8A, 9B)	4		50216-000	LHF 0-9.5° Pinion Angle	
7	56929-000	Slipper Pad	4		50217-001	RHF 0-9.5° Pinion Angle	
7A	50612-000	Slipper Pad	4		50221-001	LHR 10-12.5° Pinion Angle	
8	57566-000	Retainer Clip	8		50222-000	RHR 10-12.5° Pinion Angle	
8A	50597-000	Retainer Plate	8	28		Axle Bottom Cap (Eaton D341, D402)	
9	58287-001	Slipper Pad Lock Pin 1"	8		50216-000	LHF 0-9.5° Pinion Angle	
9A	57540-000	¾" Button Head Screw	8		50217-000	RHF 0-9.5° Pinion Angle	
9B	57306-000	¾" RoloK Screw	16		50221-000	LHR 10-12.5° Pinion Angle	
10		Shim Type Adjustable Torque Rod Assembly	4		50222-000	RHR 10-12.5° Pinion Angle	
	48411-006	HAS-360/400/402 14.41"		28	50085-000	Axle Bottom Cap (Eaton D461)	
	50376-001	HAS-460 14.41"			50086-000	LHF 0-5° Pinion Angle	
11		Torque Rod Bushing	8		50095-000	RHF 0-5° Pinion Angle	
	47691-000	HAS-360/400/402			50094-000	LHR 10-12.5° Pinion Angle	
	57256-000	HAS-460			50094-000	RHR 10-12.5° Pinion Angle	
	49176-001	Torque Rod Fastener Kit (Includes Key Nos. 12,13,14)	1	29	57122-002	Air Spring, Replaces 57122-001 (Includes Key Nos. 30,31)	4
12	22962-004	5/8" Hardened Flat Washer	16	30	50804-002	Air Spring Frame Hanger Replaces 50804-001	4
13	32043-005	5/8" 11UNC Torque Rod Bolt	8	31	17700-010	½" 13UNC Air Spring Locknut	4
14	47764-000	5/8" 11UNC Torque Rod Nut	8	32	49177-005	Air Spring Fastener Kit (Includes Key Nos. 33,34)	1
15	49689-000	Torque Rod Shim	As Req.	33	22962-014	½" Hardened Flat Washer	4
	48718-	U-Bolt Assembly, (Includes Key Nos. 16,17,18,19)	1	34	17700-010	½" 13UNC Locknut	4

SPRING SEAT ASSEMBLY

Bottom View of Spring Seat



Includes Key Nos. 25, 26, 27
Total of 4 Spring Seats Required
per Tandem Suspension

KEY NO. 24	LEFT FRONT			RIGHT FRONT				
	Eaton D341,DSS40 D402,D404,D462 Meritor RT40-145,RT46-157 RT46-160,SSHD	Eaton D461		Eaton D404, DSS40, D462		Eaton D341, D402	Eaton D461	
CASTING NO.	50923-000	50986-000		50923-000	50974-000	50974-000	50992-000	
SEAT ANGLE	⊞ PART NO.	⊞ PART NO.	NO.REQ	⊞ PART NO.	⊞ PART NO.	⊞ PART NO.	⊞ PART NO.	NO.REQ.
2.0°	50970-001	50988-001	1	50970-001	50976-012	50976-001	50994-001	1
2.5°	50970-002	50988-002	1	50970-002	50976-016	50976-002	50994-002	1
3.0°	50970-003	50988-003	1	50970-003	50976-013	50976-003	50994-003	1
3.5°	50970-004	50988-004	1	50970-004	50976-017	50976-004	50994-004	1
4.0°	50970-005	50988-005	1	50970-005	50976-014	50976-005	50994-005	1
4.5°	50970-006	50988-006	1	50970-006	50976-018	50976-006	50994-006	1
5.0°	50970-007	50988-007	1	50970-007		50976-007	50994-007	1
5.5°	50970-008	50988-008	1	50970-008		50976-008	50994-008	1
6.0°	50970-009	50988-009	1	50970-009		50976-009	50994-009	1
6.5°	50970-010	50988-010	1	50970-010		50976-010	50994-010	1
7.0°	50970-011	50988-011	1	50970-011		50976-011	50994-011	1

KEY NO. 24	LEFT REAR			RIGHT REAR				
	Eaton D404, DSS40, D462 Meritor RT40-145, RT46-160	Meritor SSHD RT46-157	Eaton D341, D402	Eaton D461		Eaton D341,DSS40 D402,D404,D462 Meritor RT40-145,RT46-157 RT46-160, SSHD	Eaton D461	
CASTING NO.	50971-000	50977-000	50977-000	50995-000		50971-000	50989-000	
SEAT ANGLE	⊞ PART NO.	⊞ PART NO.	⊞ PART NO.	⊞ PART NO.	NO.REQ	⊞ PART NO.	⊞ PART NO.	NO.REQ.
5.0°	50973-011	50979-013	50979-011	50997-011	1	50973-011	50991-011	1
6.5°	50973-012		50979-012	50997-012	1	50973-012	50991-012	1
7.5°	50973-013		50979-014		1	50973-013		1
8.0°	50973-001		50979-001	50997-001	1	50973-001	50991-001	1
8.5°	50973-002		50979-002	50997-002	1	50973-002	50991-002	1
9.0°	50973-003		50979-003	50997-003	1	50973-003	50991-003	1
9.5°	50973-004		50979-004	50997-004	1	50973-004	50991-004	1
10.0°	50973-005		50979-005	50997-005	1	50973-005	50991-005	1
10.5°	50973-006	50979-020	50979-006	50997-006	1	50973-006	50991-006	1
11.0°	50973-007		50979-007	50997-007	1	50973-007	50991-007	1
11.5°	50973-008	50979-019	50979-008	50997-008	1	50973-008	50991-008	1
12.0°	50973-009		50979-009	50997-009	1	50973-009	50991-009	1
12.5°	50973-010	50979-015	50979-010	50997-010	1	50973-010	50991-010	1
13.0°	50973-015		50979-017	50997-013	1	50973-015	50991-013	1
13.5°	50973-014	50979-016	50979-018		1	50973-014		1
14.0°	50973-016				1	50973-016		1



KEY NO.	PART NO.	DESCRIPTION	NO.REQ.	KEY NO.	PART NO.	DESCRIPTION	NO.REQ.
35	57317-	Cross Channel (Specify Dowel Pin Center)	2	50	58993-	Extension Rod (Specify Length) Replaces 58400-	1
	57430-000	Lower Bracket Fastener Kit (Includes Key Nos. 36,37,38,39)	2	50A	22107-	Extension Rod (Specify Length)	1
36	56789-000	Control Valve Arm Bracket	1	51	17491-011	5/16" 18UNC Jam Nut	2
37	22962-028	1/4" Hardened Washer	4	51A	17491-019	5/16" 24UNF Jam Nut	2
38	49983-000	1/4" 20UNC Locknut	2	52	59016-000	5/16" 18UNC Locknut	2
39	56935-002	1/4" 20UNC 1" Bolt	2	52A	48948-000	5/16" 24UNF Locknut	2
	57356-000	Lower Shock Bracket Assembly (Includes Key Nos. 40,41,42,43)	4	53	22962-029	5/16" Hardened Washer	2
40	57355-000	Lower Shock Bracket	4	54	59169-000	5/16" 18UNC Stud	2
41	50764-002	3/4" 10UNC 5 1/2" Bolt	4	55	58969-000	Valve Arm Clamp	1
42	22962-001	3/4" Hardened Flat Washer	8	56	58987-000	Adj. Valve Arm Joint	1
43	49842-000	3/4" 10UNC Locknut	4	56A	30727-000	Ball Joint	2
		Cross Channel Fastener Kit (Includes Key Nos. 44,45,46,47)	1	57	57322-001	Shock Frame Hanger Assembly (Includes Key Nos. 58, 59, 60)	4
	50763-001	HAS-360/400		58	50368-000	1/2" 13UNC Serrated Shank Bolt	4
	50763-003	HAS-402/460		59	22962-031	1/2" Hardened Flat Washer	4
44		3/4" 10UNC Bolt Forward	4	60	49846-000	1/2" 13UNC Locknut	4
	50764-005	HAS-360/400 3"		61	47902-024	Shock Absorber	4
	50764-003	HAS-402/460 3 1/2"			57905-001	Hi-Torque Shock Absorber	4
45		3/4" 10UNC Bolt Rear	4		48689-001	Quick Release Kit, Use only with: Height Control Valve 50433-001/002 (Includes Key Nos. 62, 63, 64)	1
	50764-007	HAS-360/400 2 1/2"		62	48914-000	Air Dump Switch (Located In Cab)	1
	50764-005	HAS-402/460 3"		63	49193-001	Synchro-Relay Valve	1
46	49842-000	3/4" 10UNC Locknut	8	64	48940-000	Air Switch Name Plate (Located In Cab)	1
47	22962-001	3/4" Hardened Flat Washer	16	65	30272-000	Pressure Protection Valve	1
48	57977-000	Height Control Valve	1	66		Transverse Rod Assembly	2
48A	50433-001	Height Control Valve-LH Frame Rail	1		52271-000	Straddle Pin Style	
48A	50433-002	Height Control Valve-RH Frame Rail	1		50234-000A	Taper Pin Style	
49	58994-000	Height Control Valve Arm Assy. Specify Length, (Includes Key Nos. 50, 51, 52, 53, 54, 55, 56)	1	67	22186-000	Transverse Rod Frame Bracket	2
49A	22110-000	Height Control Valve Arm Assy. Specify Length, (Includes Key Nos. 50A, 51A, 52A, 56A)	1	68	45045-003	Back Up Plate	2
				69		Transverse Rod Axle Bracket (Part of Axle)	2

