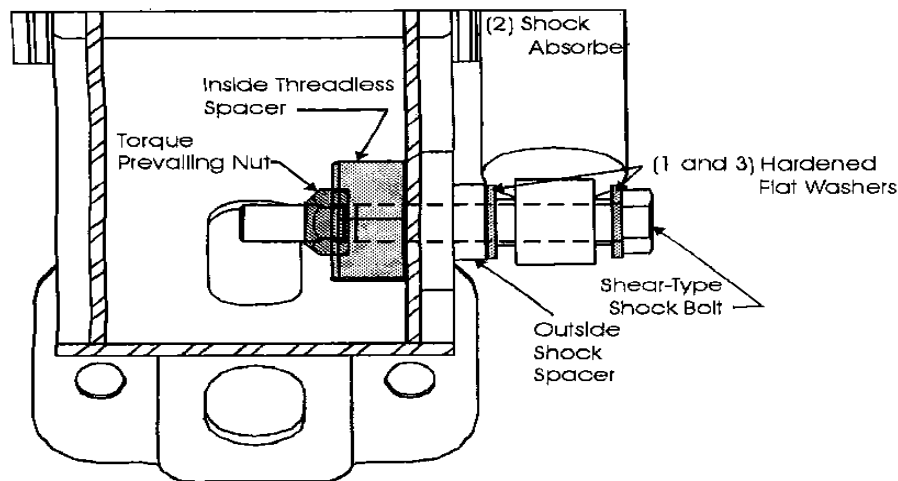


TECHNICAL BULLETIN INTRAAX TRAILER AIR SUSPENSION LOWER SHOCK ABSORBER BOLT ASSEMBLY PROCEDURE

No: TRAILER AUS - 017
Subject: *Assembly Procedure*
Date: December 2001
Revision: A



As part of our continuous product improvement program, Hendrickson have released a Technical Bulletin to inform users of the correct method of assembling the lower shock absorber bolt assembly.

For further assistance, contact the Hendrickson Customer Excellence Centre on (03) 9767-3400.

The following points should be noted as clamping load can be affected resulting in premature failure of the lower shock absorber connection:

1. The outside shock spacer must sit flush against trailing arm surface.
2. All clamping surfaces must be free of paint and dirt.
3. The torque prevailing nut must be free of paint, grease and dirt.
4. The shear head bolt must be installed using an S-24303 Torq-Rite Socket to achieve the specified torque of 285-320Nm (210-235Ft-Lbs).

WARNING:

HENDRICKSON REMINDS USERS TO ADHERE TO THE PUBLISHED CAPACITY RATINGS FOR SUSPENSIONS.

DO NOT MODIFY PARTS OTHER THAN OUTLINED IN THIS PUBLICATION.

USE OF A MODIFIED OR SUBSTITUTE PART IS NOT RECOMMENDED BECAUSE THE PART MAY NOT MEET HENDRICKSON'S SPECIFICATIONS, WHICH COULD LEAD TO FAILURE OF THE PART, LOSS OF VEHICLE CONTROL AND PERSONAL INJURY.